



**ZURI**<sup>®</sup>

PREMIUM DECKING

WARRANTY INFORMATION

**PREMIUM DECKING**  
PREMIUM COVERAGE





Nothing compares to Zuri,<sup>®</sup>  
or its warranty.

When it comes to easy, effortless and gorgeous, Zuri Premium Decking hits it out of the park. The same goes for our warranty protection.

# LIMITED 25 YEAR PRO-RATED WARRANTY

## EFFECTIVE DATE:

THIS WARRANTY IS IN EFFECT FOR ALL PRODUCTS INSTALLED AFTER 09/01/2015

## TERMS:

SUBJECT TO THE TERMS AND CONDITIONS OF THIS WARRANTY, WESTLAKE ROYAL BUILDING PRODUCTS (HEREIN WESTLAKE ROYAL) WARRANTS TO THE HOMEOWNER THAT ITS ZURI DECKING PRODUCTS ("PRODUCTS") ARE FREE FROM MANUFACTURING DEFECTS IN MATERIAL AND WORKMANSHIP IF INSTALLED ACCORDING TO OUR INSTALLATION INSTRUCTIONS, AND WILL NOT ROT, PEEL, FLAKE, CORRODE, BLISTER, SPLIT, CHIP, OR FADE UNEVENLY WHEN EXPOSED EVENLY. WHILE YOU OWN YOUR HOME, THIS WARRANTY WILL REMAIN IN EFFECT FOR 25 YEARS. THIS WARRANTY IS NOT TRANSFERABLE. WESTLAKE ROYAL RESERVES THE RIGHT TO DISCONTINUE, MODIFY OR OTHERWISE ALTER ANY OF ITS PRODUCTS, INCLUDING COLOR, WITHOUT PRIOR NOTICE.

THIS WARRANTY IS MADE EXCLUSIVELY AND SPECIFICALLY TO THE PERSON(S) WHO BOTH OWNS AND CONTINUOUSLY RESIDES IN THE HOME ON WHICH THE PRODUCTS ARE INSTALLED (HEREIN "HOMEOWNER") IF THAT PERSON IS THE ORIGINAL PURCHASER OF WESTLAKE ROYAL'S PRODUCT(S) COVERED UNDER THIS WARRANTY. THIS WARRANTY IS ALSO MADE TO A HOMEOWNER WHO PURCHASES A NEWLY CONSTRUCTED RESIDENCE ON WHICH THE PRODUCT IS INSTALLED DIRECTLY FROM THE BUILDER.

WHERE WESTLAKE ROYAL'S PRODUCT(S) ARE INSTALLED ON A STRUCTURE (I) NOT OCCUPIED EXCLUSIVELY BY THE HOMEOWNER (INCLUDING HIS OR HER IMMEDIATE FAMILY), (II) USED FOR INCOME PRODUCING PURPOSES, OR (III) USED IN A PUBLIC OR SEMI-PUBLIC APPLICATION, SUCH AS (BUT NOT LIMITED TO) A CONDOMINIUM, APARTMENT BUILDING, HOUSE OF WORSHIP, SCHOOL, MEDICAL FACILITY, SENIOR LIVING FACILITY, GOVERNMENT BUILDING, RESTAURANT, HOTEL, ETC., THEN THE WARRANTY IS MADE SOLELY TO THE ORIGINAL OWNER OF THE STRUCTURE ("COMMERCIAL OWNER") AND IS NOT TRANSFERABLE. THE TERM OF THE COMMERCIAL OWNER'S WARRANTY IS 25 YEARS, PRORATED BELOW. A COMMERCIAL OWNER FOR HIGH TRAFFIC AREAS SUCH AS BOARDWALKS, THEME PARKS, AND OTHER HIGH TRAFFIC AREAS MUST SUBMIT PLANS IN WRITING TO DETERMINE WARRANTY COVERAGE.

IF WESTLAKE ROYAL DETERMINES AT ITS SOLE DISCRETION, THAT ITS PRODUCT(S) HAVE A MANUFACTURING DEFECT COVERED UNDER THE TERMS OF THIS WARRANTY WITHIN THE FIRST 24 MONTHS, WESTLAKE ROYAL WILL AT ITS OPTION, EITHER (1) REFUND THE PURCHASE PRICE OF THE MATERIAL AND THE COST OF ORIGINAL LABOR PAID TO INSTALL PRODUCT(S), (2) PAY TO REPAIR OR REPLACE ANY PRODUCT IT DETERMINES HAS A MANUFACTURING DEFECT INCLUDING THE COST OF LABOR NOT IN EXCESS OF THE ORIGINAL COST OF INSTALLATION. AFTER THE INITIAL 24 MONTHS, WESTLAKE ROYAL WILL AT ITS OPTION, EITHER (1) REFUND THE PURCHASE PRICE OF THE MATERIAL, (2) REPLACE ANY PRODUCT IT DETERMINES HAS A MANUFACTURING DEFECT; NO LABOR COSTS SHALL BE PAID AFTER 24 MONTHS FROM INSTALLATION. IN THE EVENT OF REPAIR OR REPLACEMENT, THE WARRANTY APPLICABLE TO THE ORIGINAL PRODUCT(S) SHALL APPLY TO THE REPAIRED, REPLACED, REFINISHED OR COATED PRODUCT AND WILL EXTEND FOR THE BALANCE OF THE ORIGINAL TERM OF THE WARRANTY PERIOD. THESE REMEDIES ARE THE SOLE REMEDIES FOR ANY DEFECT TO THE PRODUCT.

## TRANSFERABILITY

THIS WARRANTY IS NOT TRANSFERABLE

## PRO-RATION SCHEDULE:

THIS WARRANTY SHALL BE A PRO-RATED WARRANTY PER THE COVERAGE CHART BELOW

FOR ZURI PRODUCT STRUCTURE (NOT COLOR FASTNESS):

NUMBER OF YEARS AFTER INSTALLATION	COVERED ON A PRORATED BASIS
UP TO 10	100%
11-13	80%
14-16	60%
17-19	40%
20-25	20%

## LIMITATIONS:

WESTLAKE ROYAL'S WARRANTY DOES NOT PROVIDE PROTECTION AGAINST ANY DAMAGE CAUSED BY EVENTS INCLUDING BUT NOT LIMITED TO:

- MISUSE, NEGLIGENCE OR IMPROPER INSTALLATION
- FAILURE TO PROVIDE REASONABLE MAINTENANCE TO PREVENT ACCUMULATION OF DIRT, MILDEW, STAINING MATERIALS, POLLUTION, EXPOSURE TO CHEMICAL PRODUCTS OR INCOMPATIBLE CLEANERS





- IMPROPER HANDLING, TRANSPORTATION, STORAGE OR MAINTENANCE PRIOR TO OR DURING INSTALLATION
- ALTERATIONS LIKE APPLYING INCOMPATIBLE COATINGS, STAINS OR VARNISHES (SEE TECHNICAL INFORMATION FOR COMPATIBLE COATINGS IF ANY)
- NORMAL WEATHERING DUE TO EXPOSURE TO THE ELEMENTS
- EXPOSURE TO PAINT, SOLVENTS, ACIDS, BASES, ABRASIVES, HARSH CLEANSERS OR OTHER SUBSTANCES NOT RECOMMENDED BY MANUFACTURER
- DEFECTS IN THE DECK OR WALL STRUCTURE (MATERIALS OR CONSTRUCTION) ON WHICH WESTLAKE ROYAL'S PRODUCTS ARE INSTALLED OR ADJACENT TO WHICH CAUSE FAILURE, SUCH AS MOVEMENT, CRACKING OR SETTLING OF THE WALL, FOUNDATION OR BUILDING
- DEFORMATION CAUSED BY HIGH HEAT SOURCES INCLUDING BUT NOT LIMITED TO GRILLS, FIRE PITS, FOIL SHEATHING, LOW E-GLASS WINDOWS AND LOW E-GLASS DOORS
- DAMAGE CAUSED BY ANIMALS OR INSECTS
- IMPACT OF FOREIGN OBJECTS, HAIL, LIGHTNING, FIRE, HURRICANE, TORNADOES, OR OTHER ACTS OF GOD
- VANDALISM, INTENTIONAL DAMAGE, RIOT OR INSURRECTION

NORMAL WEATHERING IS DEFINED AS EXPOSURE TO ULTRAVIOLET SUN LIGHT AND EXTREMES OF WEATHER AND ATMOSPHERE WHICH WILL CAUSE ANY COLORED OR PAINTED SURFACE TO FADE, DARKEN, CHALK OR ACQUIRE A SURFACE ACCUMULATION OF DIRT OR STAINS. THE SEVERITY OF THESE CONDITIONS DEPENDS ON AIR QUALITY, THE GEOGRAPHIC LOCATION OF THE PROPERTY AND OTHER LOCAL CONDITIONS OVER WHICH WESTLAKE ROYAL HAS NO CONTROL. WESTLAKE ROYAL SHALL DETERMINE, AT ITS DISCRETION, WHETHER THE DECKING IS SUFFERING FROM ABNORMAL WEATHERING. THIS CONCLUSION SHALL BE BASED ON WHETHER THE PRODUCT(S) EVIDENCE A CHANGE IN COLOR IN EXCESS OF THE HUNTER UNITS AS CALCULATED ACCORDING TO ASTM D2244, AS OUTLINED IN THE CHART HEREIN. PRODUCT(S) MUST HAVE BEEN EXPOSED TO THE SAME WEATHERING CONDITIONS AND NOT PARTIALLY COVERED BY OTHER MATERIALS SUCH AS SHUTTERS, AWNINGS, PORTICOS, OR OTHER MATERIALS.

COLORS	YEARS	NORMAL DELTA E	PRORATION SCHEDULE
ALL	25	5	100%

THIS WARRANTY IS GIVEN IN LIEU OF ALL OTHER WARRANTIES, LIABILITIES OR OBLIGATIONS OF WESTLAKE ROYAL, EITHER EXPRESSED OR IMPLIED, EXCEPT THAT THE DURATION OF ANY IMPLIED WARRANTIES OF MERCHANTABILITY AND FITNESS FOR A PARTICULAR PURPOSE ARE LIMITED IN TIME TO THE DURATION OF THIS WARRANTY. WESTLAKE ROYAL SHALL IN NO EVENT BE LIABLE FOR CONSEQUENTIAL OR INCIDENTAL OR SPECIAL DAMAGES OF ANY KIND FOR BREACH OF AN EXPRESS, WRITTEN OR ORAL OR IMPLIED WARRANTY ON PRODUCTS. YOUR EXCLUSIVE REMEDY SHALL BE ENFORCEMENT OF OF THIS WARRANTY UPON THE TERMS AND CONDITIONS HEREIN CONTAINED. NO REPRESENTATIVE OF WESTLAKE ROYAL OR ITS DISTRIBUTORS OR DEALERS IS AUTHORIZED TO MAKE ANY CHANGE OR MODIFICATION TO THIS WARRANTY.

#### **WARRANTY REGISTRATION:**

WE RECOMMEND YOU TO REGISTER YOUR PRODUCT, BY VISITING:  
[WWW.RBPWARRANTY.COM](http://WWW.RBPWARRANTY.COM)

THE REGISTRATION PROCESS IS FAST AND EASY. YOU WILL NEED TO PROVIDE: NAME, ADDRESS, DATE OF INSTALLATION, AND THE ORIGINAL PROOF OF PURCHASE FOR THE PRODUCT.

#### **WARRANTY CLAIM:**

TO MAKE A WARRANTY CLAIM ON YOUR PRODUCT, PLEASE VISIT:  
[WWW.RBPWARRANTY.COM](http://WWW.RBPWARRANTY.COM)

IF YOU HAVE ALREADY REGISTERED YOUR PRODUCT, PLEASE LOG IN USING YOUR SAME USER ID AND PASSWORD. IF YOU HAVE NOT REGISTERED YOUR PRODUCT, YOU WILL NEED TO CREATE AN ACCOUNT TO FILE YOUR CLAIM.

WITHIN 30 DAYS OF IDENTIFYING A DEFECT, THE CLAIMANT SHALL BE REQUIRED TO PROVIDE A WRITTEN DESCRIPTION WITH PICTURES DEMONSTRATING THE CLAIMED MANUFACTURING DEFECT. IN SOME CASES, AN ACTUAL SAMPLE OF THE DEFECTIVE PRODUCT MAY NEED TO BE REMOVED AT THE OWNERS EXPENSE FOR ANALYSIS. WESTLAKE ROYAL WILL ANALYZE THE PROVIDED MATERIALS AND INFORMATION TO DETERMINE THE VALIDITY OF THE CLAIM.

FOR INQUIRIES REGARDING REGISTRATION OR CLAIMS, PLEASE E-MAIL:  
[RBPCUSTOMERCARE@WESTLAKE.COM](mailto:RBPCUSTOMERCARE@WESTLAKE.COM)

#### **USE AND CARE:**

YOUR WESTLAKE ROYAL PRODUCT IS A LOW MAINTENANCE PRODUCT. PLEASE REFER TO OUR USE AND CARE BROCHURE FOR THE BEST WAY TO KEEP YOUR WESTLAKE ROYAL PRODUCT LOOKING GREAT.

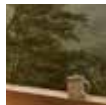
THIS WARRANTY GIVES YOU SPECIFIC LEGAL RIGHTS, AND YOU MAY ALSO HAVE OTHER RIGHTS WHICH VARY FROM STATE TO STATE.

FOR INQUIRIES AND CLAIM SUBMISSIONS, PLEASE VISIT [WWW.RBPWARRANTY.COM](http://WWW.RBPWARRANTY.COM).



# BOUNDLESS™

Giving everyone the products, tools and technology to transform spaces into anything they want. This is our mission. And it's Boundless™.



SIDING & ACCESSORIES   TRIM & MOULDINGS   ROOFING  
STONE   WINDOWS   OUTDOOR LIVING

**Westlake**  
Royal Building Products™

© 2023 Westlake Royal Building Products



Zuri Premium Decking  
ZuriDecking.com | 855-769-2585  
Item # 970133 | ZUR73358 11/22